

Specification

Customer name: powermeter

Product name: Split core current transformer

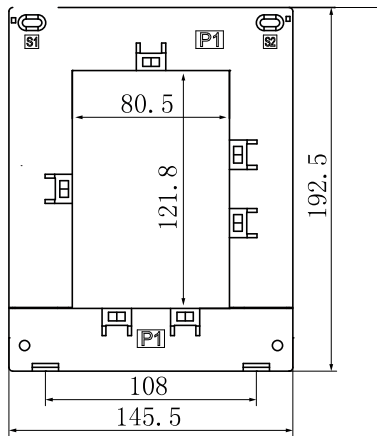
Manufacturer model: SCT12080QT

Customer No.: _____

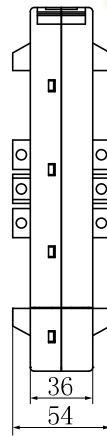
Characteristics:

1. Installation method: suspended installation and sub-plate mounting.
2. Material of core: Silicon steel sheet
3. Operating temperature: $-25^{\circ}\text{C} \sim +60^{\circ}\text{C}$
4. Storage temperature: $-30^{\circ}\text{C} \sim +90^{\circ}\text{C}$

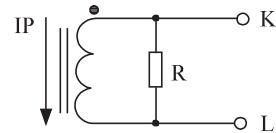
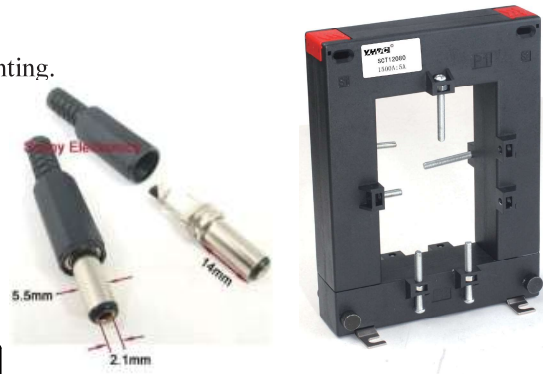
Outline size: (in:mm)



Front view



Side view



Built-in sampling resistance
Voltage output type

Connection diagram

Basic technical parameter table:

Input current	Output Voltage	Accuracy	Work frequency	Dielectric strength
2500A	1.35V	1%	50Hz-60Hz	3500V AC/min 5mA

Noted: 1 mTwo core shielded wire ,5.5DC plug.voltage output type not allowed secondary short circuit.

The above parameters are all typical values, and the actual value is subject to the actual measurement of the product.

When user confirmed the parameters please sign it, the specification will be executed as an appendix of contract

Customer sign:

"Qinhuangdao Dechang Electric Co.,Ltd

Contact person: Skiana Liu

Email: yhdc@yhdc.com

Tel: +86 335 7129734

Web: en.yhdc.com "

Approved by: _____

Checked by: _____



