

# Specification

Customer name: powermeter

Product name: Split core current transformer

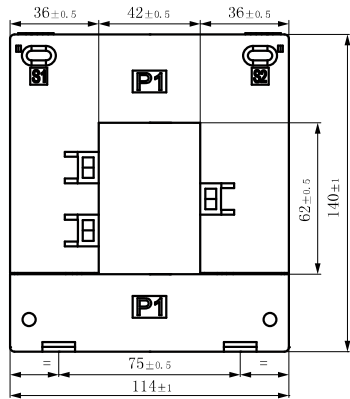
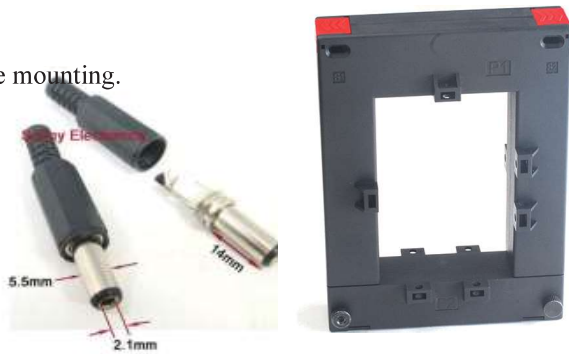
Manufacturer model: SCT6040QT

Customer No.: \_\_\_\_\_

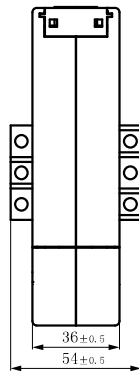
**Characteristics:**

1. Installation method: suspended installation and sub-plate mounting.
2. Material of core: Silicon steel sheet
3. Operating temperature:  $-25\text{ }^{\circ}\text{C} \sim +60\text{ }^{\circ}\text{C}$
4. Storage temperature:  $-30\text{ }^{\circ}\text{C} \sim +90\text{ }^{\circ}\text{C}$

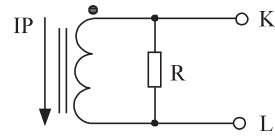
**Outline size: (in:mm)**



Front view



Side view



Built-in sampling resistance  
Voltage output type

Connection diagram

Basic technical parameter table:

Input current	Output Voltage	Accuracy	Work frequency	Dielectric strength
1600A	1.35V	1%	50Hz-60Hz	3500V AC/min 5mA

Noted: 1 m Two core shielded wire, 5.5DC plug. voltage output type not allowed secondary short circuit.

The above parameters are all typical values, and the actual value is subject to the actual measurement of the product.

When user confirmed the parameters please sign it, the specification will be executed as an appendix of contract

**Customer sign:**

Approved by: \_\_\_\_\_

Checked by: \_\_\_\_\_



"Qinhuangdao Dechang Electric Co.,Ltd

Contact person: Skiana Liu

Email: [yhdc@yhdc.com](mailto:yhdc@yhdc.com)

Tel: +86 335 7129734

Web: [en.yhdc.com](http://en.yhdc.com) "

